

Autopsy table with downdraft air extraction

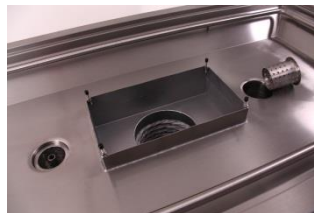


Table top

- 4 removable perforated dissecting plates (material thickness 2 mm, holes Ø 20 mm)
- Large suction area (750 x 2000 mm) with built-in sprinkler-system (with stop valve) for continuous circular table rinse, with 2 removable perforated residual container (Ø 100 mm, height 100 mm), with overflow and drain.
- Ventilation duct (Ø 200 mm) with removable protection plate
- The construction of the table prevents the water or liquides from entering into the ventilation duct.
- Extra large organ basin (600 x 400 x 200 mm), seamlessly welded, free from sharp edges and well polished, with shower head holder, drain and stand pipe.

Rectangular column

- Inside of this column, is a strong frame made of stainless steel (material thickness 2 mm) which prevents the table from tilting (the frame will be screwed onto the floor).
- Chromium-plated toggle lever for cold and warm water, 2,5 meter shower hose with adjustable shower head, 1 splash proof power socket.
- Completely prepared for connection to the facility ventilation system (exhaust air volume flow: min. 730 m³/h).
- Removable revision door

(design or specifications subject to change without notice)

No. 80544

Table top fixed

Dimensions L/W/H: 2600 x 850 x 850 mm

Power requirement: 230/1/50

Loading capacity: max. 250 kg

Weight approx. 185 kg

Packing dimensions L/W/H: approx. 2650 x 950 x 1100 mm (carton + palette)

Gross weight: 245 kg

No. 80545

With electrical height adjustment from 750 - 1050 mm

Waterproof (electrical degree of protection - IP54) UP/DOWN push button,

2 liftings columns with synchronised control

Dimensions L/W/H: 2600 x 850 x 750 – 1050 mm

Power requirement: 230/1/50

Loading capacity: max. 200 kg

Weight approx. 230 kg

Packing dimensions L/W/H: approx. 2650 x 950 x 1100 mm (carton + palette)

Gross weight: 290 kg

Accessories for Autopsy table with downdraft air extraction:

No. 80530/1

Organ Cutting Table

With instrument tray

Made of stainless steel AISI 304. The hollow HYGENIA – cutting board juts out over the edge approx. 2 mm. The cutting board is fitted in with space left to the side and to the bottom to allow liquids to drip into the drip-tray located below and drain into the viscera basin.

The drip – tray with diagonal folds towards the drain (approx. 35 mm) is located beneath the cutting board. The instrument tray is perforated and extensible.

Dimensions L/W/H: 700/850 x 500 x 320 mm

Weight approx. 20 kg



No. 80530/2

Organ Cutting Table

Without instrument tray

No. 80534

Neck support

Made of stainless steel AISI 304

Dimensions L/W/H: 380 x 150 x 150 mm

Weight approx. 2 kg



No. 81444/2

Head rest

Made of semi-hard, black, durable rubber

Dimensions L/W/H: 160 x 130 x 110 mm

Weight approx. 1 kg



(design or specifications subject to change without notice)

No. 80546

Waste disposal

For disposal of waste and residue, fits in autopsy table, activated by pneumatic switch
Height: approx. 375 mm, Ø 200 mm
Power requirement: 230/1/50
Weight approx. 5 kg



No. 80547

Hydro-Aspirator

High-performance unit combining sturdy design easy to use. Chrome brass construction. Can be fully dismantled. Direct connection to tap threads. Lever provides reverse flow for vacuum or cleansing aspiration tube. Fitted on swan neck. (Organ basin smaller: 500 x 400 x 200 mm)
Weight approx. 2 kg



**Packing dimensions Autopsy Table with Organ Table and Aspirator:
L/W/H: approx. 2650 x 950 x 1450 mm**

(design or specifications subject to change without notice)